



PIPE EXTRUSION



地址：浙江省嘉兴市海宁斜桥工业园区庆丰路128号 邮编:314406
Tel:+86-573-8778 6088 (86)135 0167 5166
Add:No.128, Qingfeng Road, Xieqiao Industrial Zone, Haining City, Zhejiang
Tel:(86)-573-8778 6088 (86)135 0167 5166
Http://www.jwell.cn www.jwell-pipe.com

邮编(p.c):314406
传真:86-573-8778 7788
Postal code:201804
Fax:86-573-8778 7788
E-mail:sales@jwell.cn



浙江金纬管道设备制造有限公司
ZHEJIANG JWELL PIPE EQUIPMENT CO., LTD.

金伟机械

浙江海宁厂区

ZHEJIANG JWELL PIPE EQUIPMENT

浙江金伟管道设备制造有限公司是金伟机械旗下的又一个重要发展战略中心和制造基地，位于浙江省海宁市斜桥工业园区。一期用地115亩，厂区内配套有先进的零部件CNC机械加工基地和规范的装配车间，年产800套塑料挤出智能装备。公司专注于塑料管道挤出装备制造和全方位的专业技术服务，用心制造符合全球中高端用户所需的塑料挤出设备。严谨的设计、严格的标准化制造过程、完善的售后服务保障体系，为用户提供高效、节能、品质卓越的生产线设备和贴心的服务。



公司产品已遍布全国各地，并出口到俄罗斯、印度、韩国、印尼、中东、非洲和南美洲、西班牙、意大利等100多个国家和地区，深受客户好评。

“品质卓越 完美如一”

是金伟公司的质量方针，是全体员工努力的方向。

“诚实待人”

是我们铸就“百年金伟”的核心理念。

董事长：何海潮

Email: he@jwell.cn

ZHEJIANG JWELL PIPE EQUIPMENT CO.,LTD, is one more important strategic center and production base of JWELL Group. It is located in XIEQIAO Industrial zone of Haining city, Zhejiang Province.. The 1st company infrastructure is designed for 76,500 square meters factories, this new factories are equipped with a lot advanced CNC machining centers and well-organized assembling workshops. Every year, there will be more than 800 intelligent extrusion equipments manufactured from this production base.. ZHEJIANG JWELL PIPE equipment co.,ltd, is focus on manufacturing pipe extrusion equipments, complete and professional technical service, we are dedicated to offering Customized extrusion equipments for our global customers. Rigorous technical design, Strict and standard production process, complete after-sale service and maintenance system, ZHEJIANG JWELL is providing high-efficiency, energy-saving, outstanding-quality extrusion equipments and caring service to our customers..

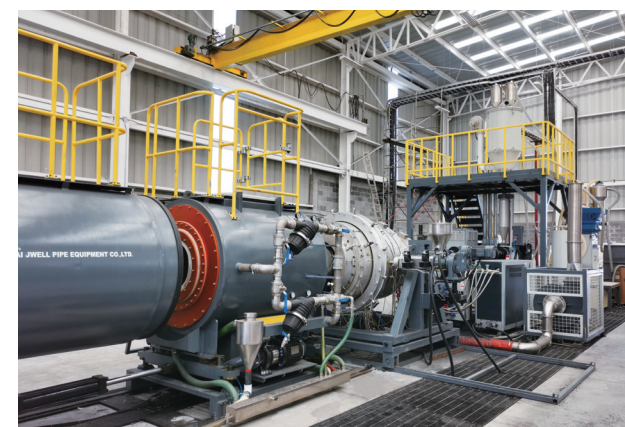
JWELL and **金海螺** are famous brands in Chinese plastic machinery industry.

JWELL machinery has been sold across the country, and exported to all continents over the world, including the market of developed country, such as Germany, America, Japan, Spain and so on.

"Excellent Quality, Perfect All" is Jwell's quality policy, and all staff's working direction.

"Be honest" is the core idea for us to contribute
"Century JWELL"

President: He Haichao Mobile/WhatsApp +86 13601628188



用心持久 品质完美

Precision Equipment Makes Perfect Products



立式 HDPE、PP、PVC 大口径双壁波纹管生产线

HDPE、PP、PVC Vertical Type Double Wall Corrugated Pipe Extrusion Line

性能和优点：该产品主要应用于城市排水、排污系统。经专业设计，精心制造的 JWSBL 立式系列 HDPE/PVC 双壁波纹管全电脑挤出生产线，具有产量高、挤出稳定和自动化程度高等优点。挤出机可根据用户原料情况特殊设计 ,HDPE 采用新型高效单螺杆挤出机 ,PVC 采用大型平双或锥双挤出机。成型机及机头精度高，模块互换性好，模块冷却方式有水冷和风冷两种，可以实现在线扩口，确保成型管材的各项性能指标，环形双刀切割机具有优异的切割精度，整条生产线采用西门子人机界面控制系统，具有很高的自控功能。

Properties: DWC pipe is mainly used for water drainage system. It is a fully computer controlled line. It features high and stable output capacity, and highly automatic operation. For HDPE, you can choose high efficient single screw extruder. For PVC, you can choose conical twin-screw extruder or parallel twin- screw extruder. Forming system consists mould and corrugator. Mould blocks can be easily changed and they have air or water cooling system. The bellng process is on line. High precision cutting can be guaranteed by cutting machine. The production line can also be equipped with SIEMENS PLC system.

双壁波纹管立式成型机技术参数 Corrugator technical data

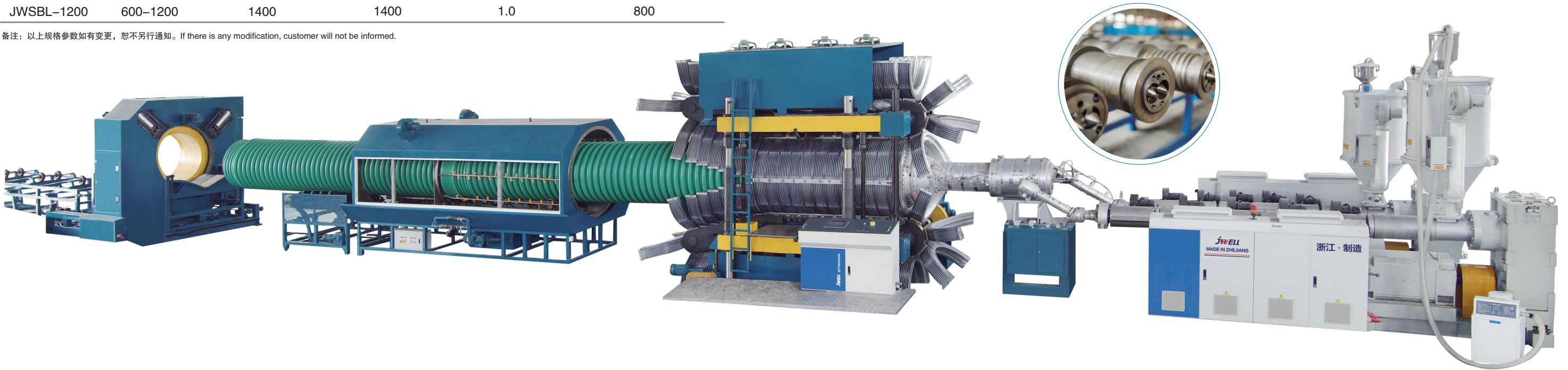
型号	管材直径(mm)	生产能力(kg/h)	生产能力(kg/h)	最大速度(m/min)	总功率(kw)
Type	Pipe Diameter	PVC Output	HDPE Output	MAX Speed	Total power
JWSBL-160	50-60	250-300	250-350	8.0	135
JWSBL-300	110-300	350-450	400-500	5.0	250
JWSBL-600	200-600	650-800	600-800	3.5	500
JWSBL-800	200-800	1200	1000	3.0	680
JWSBL-1000	200-1000	1300	1200	2.5	710
JWSBL-1200	600-1200	1400	1400	1.0	800

备注：以上规格参数如有变更，恕不另行通知。If there is any modification, customer will not be informed.



可选机型配置 Optional extruder data

生产线型号/Type	经典机型：单螺杆挤出机系列 Traditional Serial: Single screw Extruder	节能机型：锥形双螺杆挤出机系列 Saving-energy Serial: Conical screw Extruder
JWSBL-600/800	JWS 90/33+JWS 75/33	SJZ 80/156+SJZ 80/156
JWSBL-1000/1200	JWS 90/33+ JWS 120/33	SJZ 80/156+SJZ 92/188



大口径HDPE供水管、燃气管挤出生产线
Large Diameter HDPE Water Supply and Gas Supply Pipe Extrusion Line



大口径 HDPE/MDPE 供水管及燃气管生产线：
Large Diameter HDPE/MDPE Water Supply and Gas Supply Pipe Extrusion Line

性能和优点：金纬公司自行研制开发的HDPE/MDPE供水管及燃气管生产线其结构独特，自动化程度高，操作方便、连续生产稳定可靠。该生产线生产的管道具有适度的刚性、强度、又具有良好的柔性、耐蠕变性、耐环境应力开裂性和良好的热熔接性能，已成为城市燃气输送管道和室外给水管的首选产品。

Properties:The Large Diameter HDPE/MDPE Pipe Extrusion Line research & developed by Jwell Machinery Co., features of unique structure, easily control, highly automation and stable performance. Pipes produced by this machine has the moderate rigidity, strength, as well as good flexibility, anti-rot, anti-stress split, and favorable hot melting, make this large diameter pipe considered as the prefer product for water and gas transportation system in cities.

大口径 HDPE 二层、三层双抗管挤出生产线：
Large Diameter HDPE 2-layer, 3-layer Anti-flammable And Anti Static Electricity Pipe Extrusion Line

性能和优点：金纬公司新研制的二层或三层螺旋模具用于双抗管材挤出，共挤层壁厚均匀，内层和外层采用双抗料(阻燃、抗静电)，芯层采用普通HDPE，大大减少双抗料的使用量，从而降低双抗管的成本。

Properties:The modern developed 2-layer or 3-layer spiral mould is specially for double-anti pipe extrusion. This pipe owns even and equal co-extrusion wall thickness, the inner and outer wall made of double-anti material (Anti-flammable, anti static electricity), the core layer of HDPE wall, reasonably reduce the costs of double-anti material, accordingly reduced the costs of the whole product.

主要技术参数 Main technical parameter

生产线型号/Type	管材规/Diameter(mm)	配套挤出机/Extruder	最大挤出量/Capacity(kg/h)	总装机功率 /Power(kw)
JWPEG-800	Φ 400~Φ 800	JWS120/38	1000-1300	600
JWPEG-1000	Φ 500~Φ 1000	JWS120/38	1000-1300	650
JWPEG-1200	Φ 630~Φ 1200	JWS90/38 × 2	1000-1600	960
JWPEG-1600	Φ 1000~Φ 1600	JWS120/38+90/38	1000-1700	1300
JWPEG-2000	Φ 1200~Φ 2000	JWS120/38+90/38	1000-2000	1400

备注：以上规格参数如有变更，恕不另行通知。If there is any modification, customer will not be informed.

高速机-管材挤出生产线：HDPE燃气管、供水管
High Speed Extrusion Line for HDPE Water Pipe/Gas Pipe

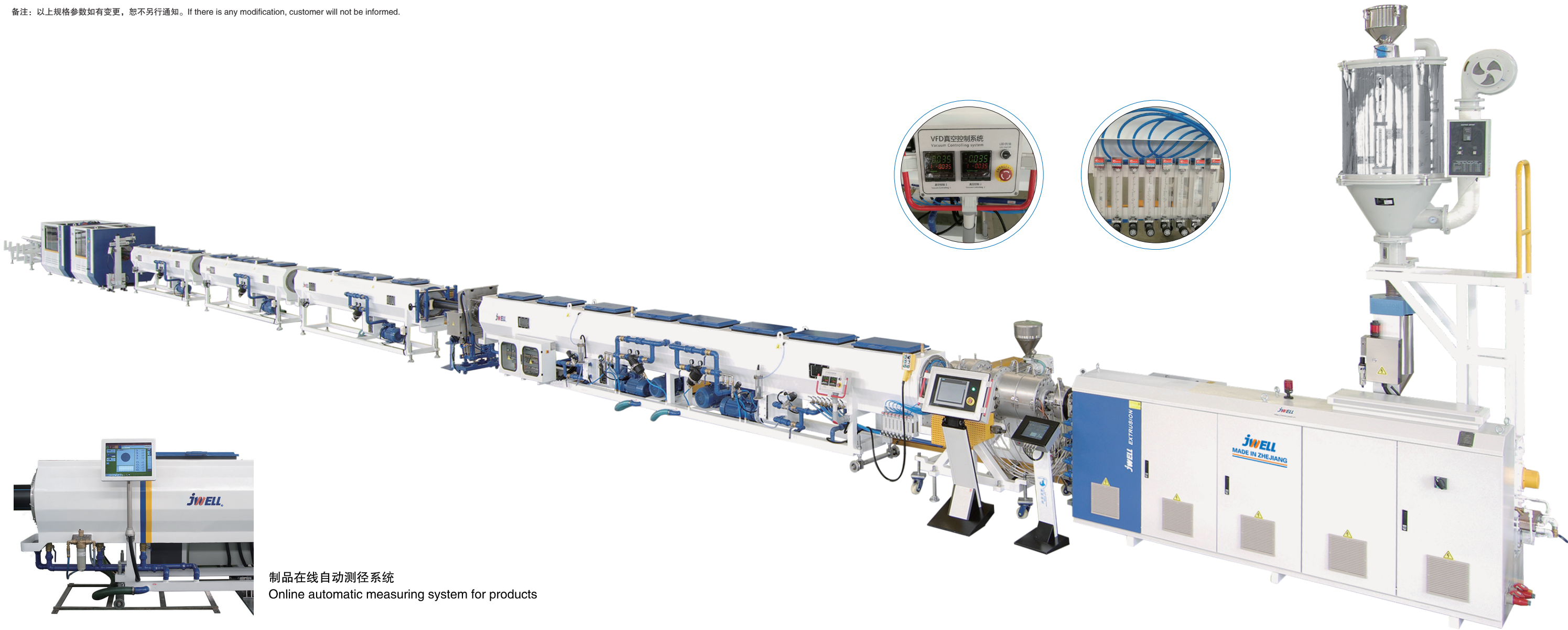
主要技术参数 Main technical parameter

生产线型号	管材规格	配套节能挤出机	实际最大挤出量	总装机功率
Model	Diameter(mm)	Extruder	Capacity(kg/h)	Power(kw)
JWGXPE-110	Φ20~Φ110	JWS60x40	360	150
JWGXPE-315	Φ90~Φ315	JWS75x38	600	230
JWGXPE-450	Φ160~Φ450	JWS90x38	900	450
JWGXPE-630	Φ315~Φ630	JWS120x38	1300	630

备注：以上规格参数如有变更，恕不另行通知。If there is any modification, customer will not be informed.

性能和优点：该生产线是我公司采用欧洲先进技术，新研制开发的节能高速生产线，适用于HDPE、PP等聚烯烃类管材的高速挤出。与普通生产线相比，其节能效果达到35%左右，其生产效率增加了1倍多，不但可以节省了场地及人力成本，还提高了效率。该生产线外形美观，自动化程度高，生产稳定可靠。

Properties:This production line adopts the most advanced technology of Europe,It is a new research achievement of energy-saving production line,which is suitable for high speed extrusion of HDPE,PP and other polyolefin pipe.compared with common production line,the energy-saving effect reach on 35%,and the product efficiency increase more than 1 times, thus it is not only saving the cost of site and manpower, but also improving efficiency. This production line has nice appearance,higher automatical degree, production reliable and stable.



PPR、PERT、PEX等冷热水管挤出生产线

PPR/PERT/PEX/Cool&Hot Water Pipe Extrusion Line

PPR，HDPE单管及一模双出管材生产线

PPR，HDPE single pipe and dual-strand pipe production line

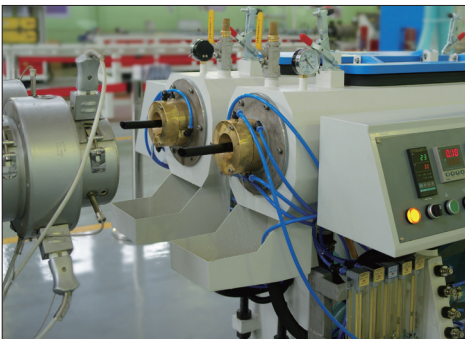
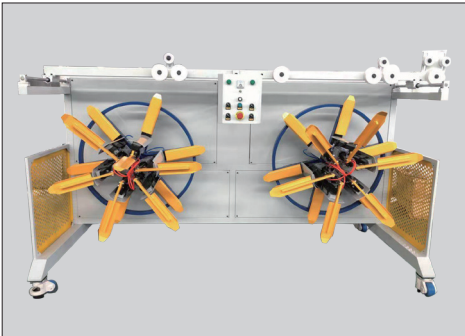
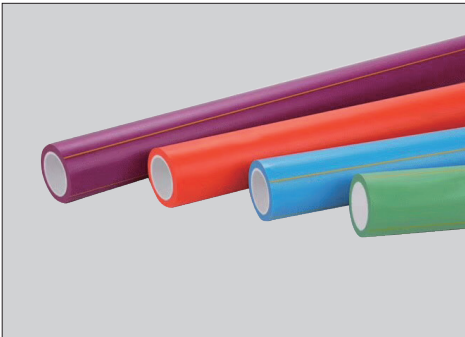
性能和优点：JWELL公司设计的高效PP-R、HDPE单管及一模双出管材生产线，专门针对PP-R、HDPE材料特性，采用我司自主研发的JWS系列高效单螺杆挤出机，配有西门子PLC工控系统，可实现从挤出机到辅机整个生产线的自动控制，产量高、挤出稳定。

Properties: High efficiency PP-R, HDPE single pipe and dual-stand pipe production line are aim at the characteristic of the PP-R and HDPE pipes.This line adopts our own JWS series high efficiency single screw extruder.

主要技术参数 Main technical parameter

生产线型号 Type	生产管材规格 Pipe spec(mm)	挤出机 Extruder	最大挤出量 Max.output(kg/h)	总装机功率 Total power(kw)
JWS-PPR-63(单 single)	Φ 20-Φ 63	JWS60x40	100~120	110
JWS-PPR-63(双 double)	Φ 20-Φ 63	JWS60x40	200~260	150
JWS-PERT-32(低速 low speed)	Φ 16-Φ 32	JWS60x40	100~120	110
JWS-PERT-32(高速 high speed)	Φ 16-Φ 32	JWS60x40	180~220	140
JWS-PERT-32(双 double)	Φ 16-Φ 32	JWS60x40	250~300	140
JWS-PE/PERT-63(双 double)	Φ 20-Φ 63	JWS60x40	250~300	140

备注：以上规格参数如有变更，恕不另行通知。If there is any modification, customer will not be informed.



UPVC/CPVC双管挤出、四管挤出生产线

UPVC/CPVC Dual-strand Extrusion, Four Strand Extrusion Line

性能特点: 在生产小口径管材而要求高产量的情况下，尤其显现出使用双管挤出的优势。我们的双管下游设备的特点是带两套独立的控制回路，每条管线的速度可以分别调整，甚至可以同时生产不同管径的管材。

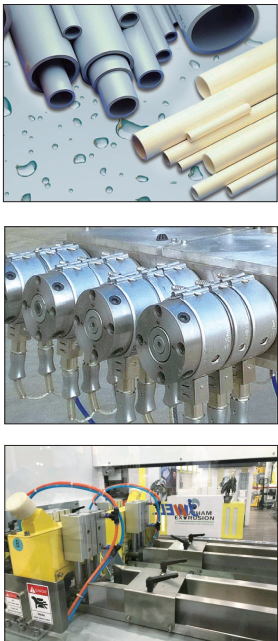
四管挤出生产线适用于32以下管材的高速生产，单边管材速度最高达到25m/min。

该生产线采用特殊的螺杆与模具设计，物料塑化均匀，生产速度快，能耗低。控制操作方便，降低对操作工人操作的技术要求。并且有效节省了生产场地所需空间。

Main charaters: In the production of small diameter pipe and requirements under the condition of high output, especially shows the advantages of using dual-strand extrusion. The characteristics of our dual-strand downstream equipment is with two sets of independent control circuit, the speed of each pipeline can be adjusted respectively, and can even produce different diameter of the pipe at the same time.

Four strand extrusion line is suitable for the ≤ 32 mm pipe with high-speed production, unilateral pipe speed up to 25 m/min.

This extrusion line adopts special screw and mould design, materials uniform plasticizing, fast production speed, low energy consumption. Control is easy to operate, reduce the technical requirements of the operation of operating workers. And effectively save the workshop space.



主要技术参数 Main technical parameter

生产线型号 Type	生产管材规格 Pipe spec (mm)	最大挤出量 Max.output (kg/h)	总装机功率 Total power (kw)
JWG-PVC32 (四管Four srtrand)	Ø20 ~ Ø32	250 ~ 300	104
JWG-PVC63 (双管Two strand)	Ø20 ~ Ø63	250 ~ 300	105
JWG-PVC110 (双管Two strand)	Ø50 ~ Ø110	300 ~ 400	145

UPVC/CPVC管材挤出生产线

UPVC/CPVC Strand Extrusion Line

性能特点: 针对不同直径、不同生产量需求，有多种规格型号的PVC专用双螺杆挤出主机可供选择。特殊设计的螺杆结构，塑化均匀，产量高。

PVC挤出模头采用优质合金钢制造，流道表面高光亮度和防腐处理。宽大的流道设计确保熔体在模头内的停留时间和最大的挤出产量。

针对大口径的PVC管材采用前后双真空室结构设计，并配有圆弧托板，管材圆度好成型质量高。

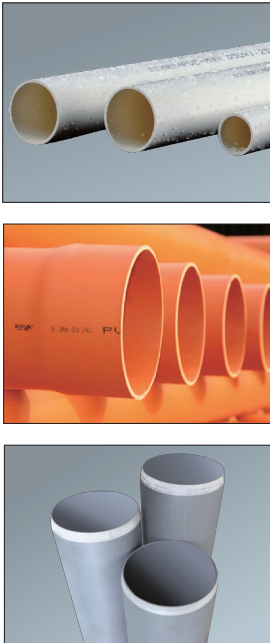
从2履带至10履带数量的牵引机，配套不同规格的行星切割机，适应所有尺寸规格的PVC管材生产。配套可选在线扩口机。

Properties: According to different diameter, different production requirements, a variety of special specifications of PVC twin-screw extrude to used. The special designed screw structure, uniform plasticizing, high output.

PVC extrusion die head used high quality alloy steel manufacturing, channel surface with brightness and anti-corrosive. Wide flow channel design to ensure the retention time of the melt in the die head and the largest extrusion production.

In view of the large diameter PVC pipe,the vacuum tank used double vacuum chamber structure design, equipped with a circular plate, making pipe roundness and forming better.

Haul-off unit used 2 to 10 caterpillars, mating with different specifications of the planetary cutting machine, adapt to all PVC dimensions pipe production.Optional online belling machine.



主要技术参数 Main technical parameter

生产线型号 Type	生产管材规格 Pipe spec (mm)	挤出机 Extruder	最大挤出量 Max.output (kg/h)	总装机功率 Total power (kw)
JWG-PVC160	Ø63 ~ Ø160	SJZ65/132	250 ~ 300	100
JWG-PVC250	Ø75 ~ Ø250	SJZ65/132	250 ~ 300	110
JWG-PVC315	Ø160 ~ Ø315	SJZ80/156	300 ~ 400	180
JWG-PVC450	Ø200 ~ Ø450	SJZ80/173	450 ~ 500	245
JWG-PVC630	Ø315 ~ Ø630	SJZ92/188	650 ~ 750	350
JWG-PVC800	Ø400 ~ Ø800	SJZ110/220	1000 ~ 1300	420
JWG-PVC1000	Ø500 ~ Ø1000	SJZ110/220	1000 ~ 1300	460

多层PPR/PE复合管材生产线

Quality Multi-layer PPR/PE Composite Pipe Extrusion line

产品特性及应用

金纬机械自主研发的PPR玻纤管挤出生产线的技术参数优于国内同类产品，部分性能指标甚至超过国外同类产品。PPR玻纤管较普通PPR管耐压、耐高温性能更高，使用寿命更长，高强度、抗冲击性能更好，防止管道下垂现象，是太阳能、热能循环系统、取暖系统，自来水供应理想的选择。

PPR/FR-PP pipe is widely used in solar energy, thermal energy circulation system, heating system and water supply because of its higher pressure and temperature resistance, long operational life span, high strength and impact resistance, and the prevention of pipe line sagging.

主要技术参数 Technical data

型号Type	管材规格 Diameter(mm)	挤出机Extruder	挤出量 Capacity(kg/h)	总装机功率 Power(kw)
JWPEG-63	Φ20-Φ63	JWS65/33	100-150	100
JWPEG-110	Φ20-Φ110	JWS65/33	150-200	130
JWPEG-160	Φ63~Φ160	JWS65/33	200-250	145

备注：以上规格参数如有变更，恕不另行通知。If there is any modification, customer will not be informed.



经典型-管材挤出生产线：HDPE管、PP/MPP管等

Classic Type Pipe Extrusion Line For HDPE Pipe, PP/MPP Pipe and So On

性能和优点：该生产线被广泛应用于HDPE供水管、燃气管、煤矿双抗管及非开挖管材领域。该生产线是我公司采用欧洲先进技术，经消化吸收，成功研制开发的新型管材生产线，适用于HDPE、PP等聚烯烃类管材的高速挤出。该生产线外形美观，自动化程度高，生产稳定可靠。

Properties:Our company using the development HDPE,PP pipes extrusion technology develops this kind of extrusion line. This line features compact structure, highly automation and stable performance. This line is widely used in producing HDPE water, gas supply pipe, double-anti pipe for mine industries.

主要技术参数 Main technical parameter

型号Type	管材规格 Diameter(mm)	挤出机Extruder	挤出量 Capacity(kg/h)	总装机功率 Power(kw)
JWMPP-315	Φ110-Φ315	JWS75/38	400-500	230

备注：以上规格参数如有变更，恕不另行通知。If there is any modification, customer will not be informed.



新风管生产线

New Corrugated Pipe Extrusion Line for Ventilation System

应用领域：新风波纹圆管内外层由不同性能的PE材料复合而成，双壁中空波纹结构设计，不仅可安装在天花板、吊顶结构中，同时波纹管的超强耐压性能也是混凝土安装的理想选择。新风波纹圆管独特的双壁中空波纹结构，具有防静电和抗菌的内涂层，内壁光滑、易清洁、摩阻小、隔音、保温。

Application: corrugated pipe for air ventilation system is produced by two different PE material. Double wall corrugated pipe, and designed by hollow structure. It is easy to install in the ceiling and roofing. Also, this corrugated pipe has good performance to bear the cement. The pipe adopt special inner layer, smoothly, easy to clear, less resistance, sound-proof, insulation.

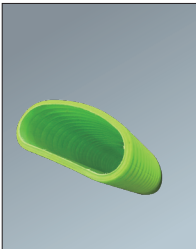
性能与特点：金纬公司自主研发新型新风管生产线，前后对中精度高，针对新风管材料特性，专门开发了特有的模具结构，独特的水套更加适应新风波纹管系列。成型机采用新式立式水冷机，模块定位精准，更换方便。

Properties: high precision for front-back adjustment, according to air ventilation pipe, specially design for the mould. New vertical type water cooling corrugator, precisely location of mould block, easy to change the mould.

主要技术参数 Main technical parameter

型号Model	管材外径OD. Range (mm)	设备长度LxWxH(m)	总功率(km)
JWXFG110	63, 75, 90, 110	25mx3.3mx3.2m	194

备注：以上规格参数如有变更，恕不另行通知。Note:The specifications are subject to change without prior notice.



保温管生产线

PE Insulation Pipe Extrusion Line

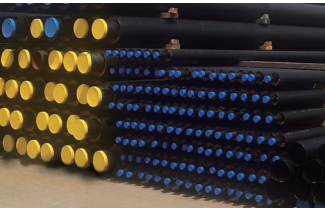
应用领域：PE保温管也叫PE外护管，夹克管，套袖管。直埋聚氨酯保温管是由高密度聚乙烯外保护层、聚氨酯硬质泡沫塑保温材料 and 钢管组成。保温层材料为密度60kg/m³至80kg/m³的硬质聚氨酯泡沫，充分添满钢管与套管之间的间隙，并具有一定的粘接强度，使钢管、外套管及保温层三者之间形成一个牢固的整体。聚氨酯直埋保温管泡沫具有良好的机械性能和绝热性能，通常情况下可耐高温120℃通过改性或与其它隔热材料组合可耐高温180℃，适用于各种冷、热水高低温管道的保温工程。

性能与特点：金纬公司自主研发新型PE保温管生产线，采用金海螺独有保温管螺杆技术，挤出稳定。结合多年的PE挤出经验，设计符合PE保温管模具，模具压力稳定。整线相比传统吹气式产量大幅度提高，表面更加光亮，操作自动化程度高。

主要技术参数 Main technical parameter

型号	生产范围	主机	设备外形LxWxH(m)	总功率(km)
JWGB630	200– 630	JWS–75/38	30mmx3mx4m	290KW
		JWS–90/33		
JWGB1000	315– 960	JWS–90/38	34mx3mx4m	342KW
		JWS–90/33		
JWGB1400	760– 1380	JWS–120/38	40mx3.5mx4.3m	472KW
		JWS–120/33		
JWGB1700	1054– 1680	JWS–120/38	40mx3.5mx4.3m	512KW
		JWS–150/33		
JWGB2000	1054– 1960	JWS–120/38	49mx4.5mx5m	670KW
		JWS–150/33		

备注：以上规格参数如有变更，恕不另行通知。Note:The specifications are subject to change without prior notice.



结构壁缠绕管生产线

PE Structure-wall Spiral Pipes Extrusion Line

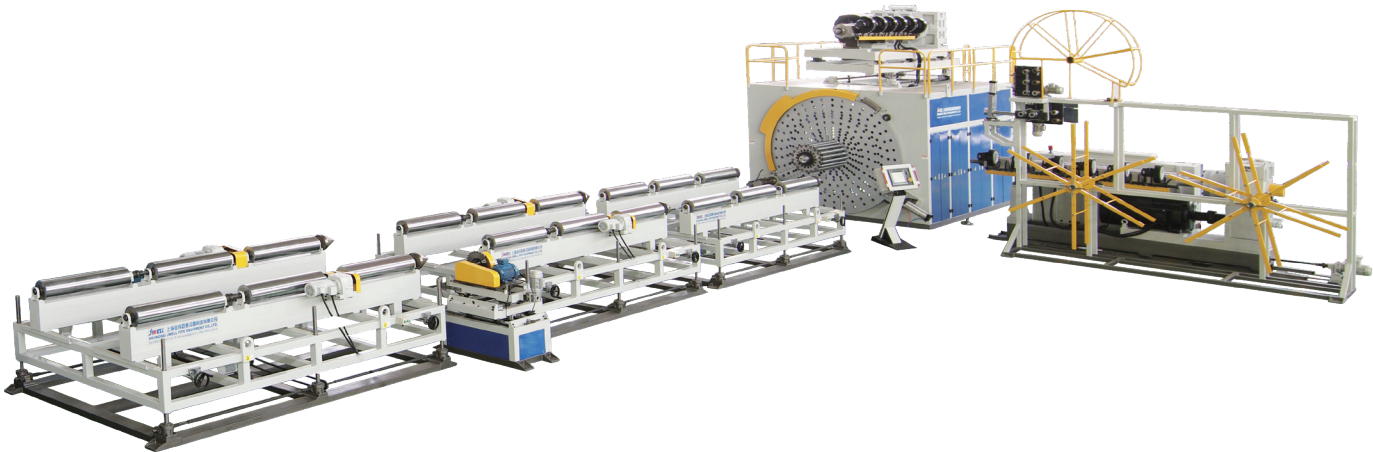
应用领域：PE缠绕结构壁管，是以聚乙烯树脂为主，采用缠绕成型工艺制成的用于无内压作用的热塑性塑料圆管的统称。该管具有极强的耐化学药品腐蚀和侵蚀的能力，柔韧性好抗冲击强，耐寒性、耐老化。连接简单，安全可靠。

性能与特点：金纬公司自主研发新型连续型缠绕管线，采用金纬自制的片材模具，结合片材稳定的生产方式，连续缠绕生产。取消了传统缠绕管克拉管需要天然气加热的方式，更加安全可靠，对工人操作更加简便。

主要技术参数 Main technical parameter

型号	生产范围	主机	设备占地面积	总功率（KW）
JWPK800	300- 800	JWS-65/33+JWS-45/33	20米*10米	187KW
JWPK1200	300- 1200	JWS-65/33+JWS-75/33	20米*12米	267KW
JWPK2000	1000- 2000	JWS-65/33+JWS-90/33	20米*16米	327KW
JWPK3000	2000- 3000	JWS-75/33+JWS-90/33	25米*19米	407KW

备注：以上规格参数如有变更，恕不另行通知。Note:The specifications are subject to change without prior notice.



卧式HDPE、PP、PVC 大口径双壁波纹管生产线

HDPE/PP/PVC Horizontal Type Double Wall Corrugated Pipe Extrusion Line

性能和特点：HDPE/PP/PVC 双壁波纹管应用广泛。本公司自主研发的HDPE 双壁波纹管生产线，拥有多项专利技术。自动化程度高，运行稳定，产量高。HDPE/PP 采用新型高效单螺杆挤出机，PVC 采用大型平双或锥双挤出机，挤出量大。成形机采用卧式结构，梭式传动，密封水冷结构，真空成型，可实现在线双层扩口。整线采用电脑人机界面控制，具有很高的自控性。

Properties:HDPE/PP/PVC horizontal type DWC pipe extrusion line produced by Jwell has many patents. Full automatic control, running stable, high capacity. HDPE/PP material use high efficient single screw extruder, and PVC material use conical twin screw extruder. Horizontal type corrugator adopt advanced shuttle-type structure, closed water cooling system, on-line bellling. Whole line is controlled by PLC computer.



主要技术参数 Main technical parameter

型号	管材直径(mm)	生产能力(kg/h)	生产能力(kg/h)	最大速度(m/min)	总功率(kw)
Type	Pipe Diameter	PVC Output	HDPE Output	MAX Speed	Total power
JWSBW-160	90-160	150-250	200-300	6.0	135
JWSBW-250	110-250	250-350	250-350	5.0	280
JWSBW-500	200-400	650-750	250-500	3.0	550
JWSBW-800	500-800	---	1000-1100	3.0	680
JWSBW-1200	800-1200	---	1000-1200	1.0	800
JWSBW-1500	1200-1500	---	1200-1500	0.6	1100

备注：以上规格参数如有变更，恕不另行通知。Note:The specifications are subject to change without prior notice.

特种用途的单壁、双壁波纹管机组

Special Use Single Wall and Double -Wall Corrugated Pipe Extrusion Line

PA/PE/PP/PVC 单壁、双壁波纹管生产线

PA/PE/PP/PVC single wall, double-wall corrugated pipe extrusion line

小单壁高速波纹管成型机：可生产一模双径或一模三径的小单壁波纹管，降低模块成本，减少更换模块的时间，提高效率。

Mini single wall high speed corrugated pipe forming machine: Can produce two diameters or three diameters single wall corrugated pipe in the same mould blocks, which reduce the cost of the mould blocks and reduce the time for changing the mould blocks, increase the efficiency.

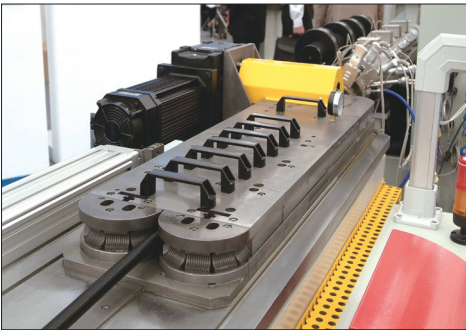
性能和特点：该设备生产出的管材，耐高温，耐腐蚀，而磨损，强度高。用于电气穿线管、汽车穿线管、护套管、机床产品、包装食品机械、电力机车、工程安装、灯具、自动化仪器仪表等领域，市场需求大。金纬公司特殊螺杆、模具的结构设计合理，更换模具方便可靠，解决了螺杆机筒易磨损及物料成形难的问题，生产线速度快，运行稳定，控制简捷易操作。

Properties: The pipe from this machine is anti-high temperature, anti-wear,and high strength, and it is widely used in electrical conduct, car conduct pipe, protective pipe, machine area and automatic meter area. With Jwell special design screw and advanced mould, the line is high speed, run stable and easy-control.

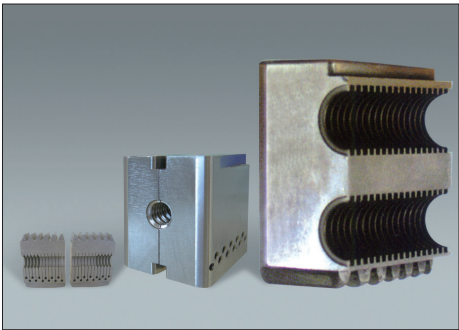
主要技术参数 Main technical parameter

型号Type	JWSB160	JWDPG-75
螺杆直径(mm)	Φ75	Φ65
长径比(L/D)	33:1	33:1
总装机功率(kw)	100	80
管材规格(mm)	Φ90-Φ160	Φ50-Φ75
牵引速度(m/min)	5	10

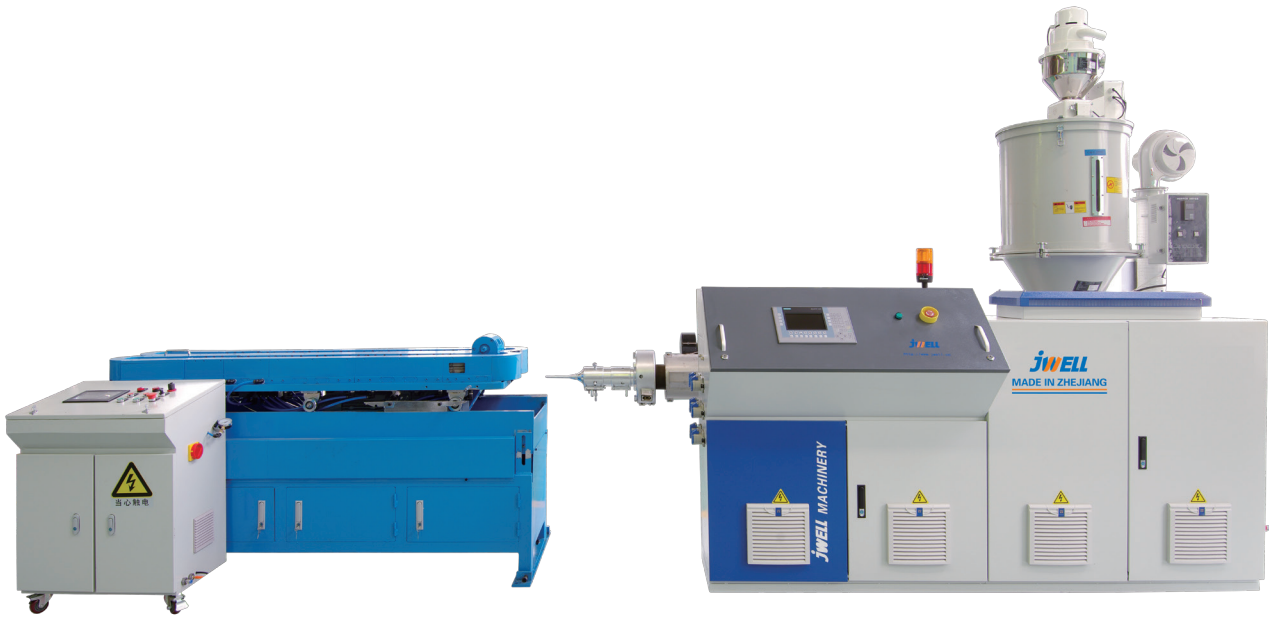
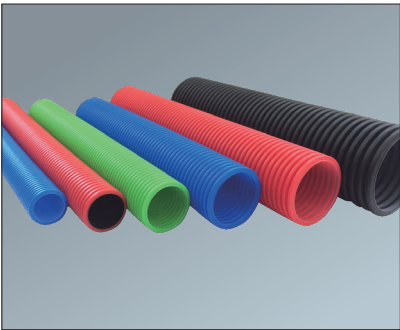
备注：以上规格参数如有变更，恕不另行通知。If there is any modification, customer will not be informed.



小型高速波纹管成型机
mini high speed corrugated
pipe forming machine



各种单壁双壁波纹管小型模块
various single & double wall corrugated
pipe forming machine



主要技术参数 Main technical parameter

型号Type	JWDPG-63	JWDPG-25	JWDPG-10
螺杆直径(mm)	Φ65	Φ45	Φ45
长径比(L/D)	33:1	30:1	30:1
总装机功率(kw)	70	50	45
管材规格(mm)	Φ16-Φ63	Φ8-Φ20	Φ6-Φ10
牵引速度(m/min)	10	15	20

备注：以上规格参数如有变更，恕不另行通知。If there is any modification, customer will not be informed.

PVC双螺杆造粒挤出生产线

PVC Twin Screw Extruder Pelletizing Extrusion Machine

性能和优点：该机组是由系列锥形双螺杆挤出机与相应造粒辅机组成的成套设备，主要适用与PVC、PE类粉料添加木粉或填充料的造粒。生产的塑料颗粒均匀、密实、美观，辅机采用模面切粒，风送集料，振动分离冷却，具有自动化程度高，生产效率佳等特点。

Properties: This pelletizing machine is composed by a conical twin-screw extruder and the correspondingly pelletizing downstream equipment, it is suitable for the pelletizing of PVC, PE raw materials with wood powder or other additives. The pellets produced by this machine is evenly, solid, elegance. The pelletizing downstream equipment is the die face cutter, air transferring unit,vibration separating and cooling unit. This pelletizing downstream equipment has the features of high automation and high production efficiency.



主要技术参数 Main Technical Parameters

主机型号 Model	螺杆规格 Specifications(mm)	颗粒规格 Specifications(mm)	主电机功率 Power of main motor(Kw)
SJZ65	65/132	ø3-ø4	37
SJZ80	80/156	ø3-ø4	55
SJZ92	92/188	ø3-ø4	110

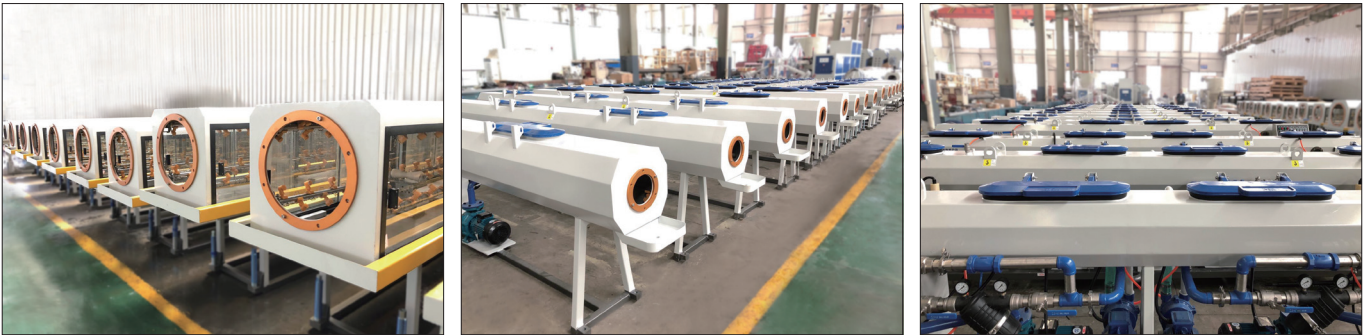
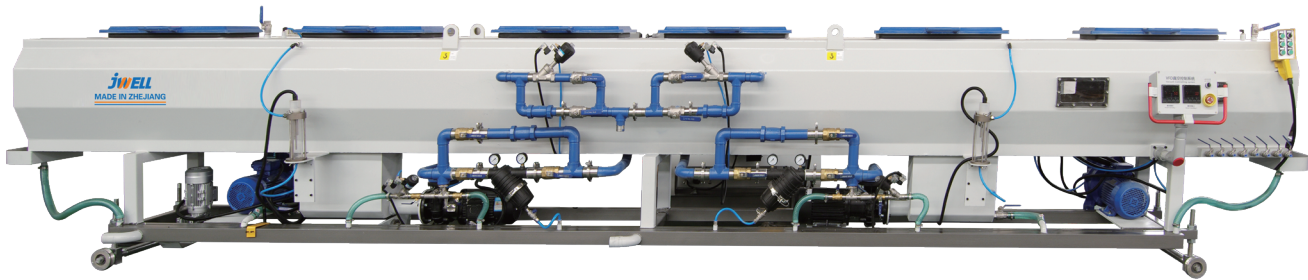
备注：以上规格参数如有变更，恕不另行通知。Note:The specifications are subject to change without prior notice.

真空定径系统/冷却喷淋箱

Vacuum Tank/Spray Cooling Tank

性能和优点：根据管材的规格可选定单室或双室设计的定径真空箱；SUS304不锈钢材质的真空箱体和管路，使用寿命长；精确的水温控制和水位控制；大容量的水过滤器和备用旁路；集中供水和排水；可选配PLC管理的变频精确控制真空度，降低设备能耗和噪音；特别选用铜合金和不锈钢等优质材料制作的定径套，保证良好的热传导，冷却定径效果好。定径套内表面采用镀铬特殊涂层处理，具备高耐磨性和高光滑度。水膜式、碟片式、干式等多种结构设计，适用于不同原料管材的高速、高产量挤出。

Properties: According to the specifications of the pipes can be selected single room or double room design of the vacuum tank;- SUS304 stainless steel vacuum tank and pipeline with long service life;Accurate temperature control and water level control;The large capacity of water filters and spare bypass;Centralized water supply and drainage;Optional PLC frequency conversion precision control of vacuum degree, lower equipment energy consumption and noise;The sizing sleeve made of high-quality materials such as alloy copper and stainless steel is particularly selected to ensure good heat conduction and a good cooling sizing effect. The inner surface of the sizing sleeve is treated with a chrome-plated special coating that provides high wear resistance and high smoothness. Water film type, disc type, dry type and other structural designs are suitable for high-speed, high-volume extrusion of different raw material pipes.



主要技术参数 Main Technical Parameters

真空箱规格	GZK110	GZK160	GZK315	GZK500	GZK630	GZK1200	GZK1600
喷淋箱规格	GPL110	GPL160	GPL315	GPL500	GPL630	GPL1200	GPL1600
适用管材直径mm	16-110	20-160	63-315	110-500	200-630	680-1200	710-1600

备注：以上规格参数如有变更，恕不另行通知。Note:The specifications are subject to change without prior notice.

HDPE单螺杆挤出机

Extruder: HDPE Single Screw Extruder

性能和优点：采用新型屏障式螺杆，实现高转速，高挤出量，低能耗，并且在低温下能达到理想的混炼效果，严格控制剪切作用，以获得理想均匀的物料温度，避免了大口径的管材内壁产生涟漪纹的现象。

Properties: By using the new type barrier screw design, this extruder has a high extrusion capacity in high RPM with the low energy consumption, and this extruder can gain a good mixing effect in the low temperature, and this extruder can control the material shearing to get the ideal and even melt temperature, so that the ripple mark in the inner wall of the big diameter pipe can be avoided.



38系列 主要技术参数 Main technical parameter

型号 Model	螺杆直径(mm) Screw Diameter	长径比 L/D ratio	主电机功率(km) Main motro power	HDPE 挤出量(kg/h) HDPE extrusion capacity
60x40	60	40	90	360
75x38	75	38	160	600
90x38	90	38	250	900
120x38	120	38	315	1300

33系列 主要技术参数 Main technical parameter

型号 Model	螺杆直径(mm) Screw Diameter	长径比 L/D ratio	主电机功率(km) Main motro power	HDPE 排出量(kg/h) Capacity
JWS45/33	45	33	18.5/22/30	60–100
JWS65/33	65	33	55/75/90	100–250
JWS75/33	75	33	110/132	250–350
JWS90/33	90	33	160/185	450–550
JWS120/33	120	33	280/315	700–900
JWS150/33	150	33	355/400	1000–1300

备注：以上规格参数如有变更，恕不另行通知。Note:The specifications are subject to change without prior notice.

SJZ系列锥形双螺杆塑料挤出机

SJZ Series Conical Twin–Screw Extruder

用于管材挤出 For pipe extrusion

型号Model	SJZ–55	SJZ–65	SJZ–80	SJZ–92	SJZ–110
螺杆直径 Dia (mm)	55/110	65/132	80/156	92/188	110/220
螺杆最高转速 Speed(rpm)	45	45	34.7	34.7	34.7
主电机 Motor(kw)	22/30	37	55	110	160
生产能力 Capacity (kgs/h)	180	380	500	800	1400
中心高 Center for high (mm)	1050	1050	1050	1100	1100
净重 Weight (kg)	3500	4000	5500	8000	9000
外形尺寸 (L×W×H)(m)	3.6×1.1×2.1	4.2×1.5×2.4	4.7×1.5×2.4	6×1.6×2.5	6.5×1.6×2.5

备注：以上规格参数如有变更，恕不另行通知。Note:The specifications are subject to change without prior notice.

SJP系列异向平行双螺杆挤出机

SJP Series Parallel Twin–Screw Extruder

用于管材挤出 For pipe extrusion

型号 Model	SJP75/28	SJP93/31	SJP110/31	SJP120/31	SJP135/31
电机功率 Power (KW)	45	75	110	132	160
螺杆直径 Dia (mm)	75	93	110	120	135
最大转速 Speed (rpm)	45	45	45	45	45
长径比 (L/D)	28:1	31:1	31:1	31:1	31:1
最大产量 Capacity (Kg/h)	320	420	680	850	1100
重量 Weight (Kg)	4100	4700	6500	7500	8400

备注：以上规格参数如有变更，恕不另行通知。Note:The specifications are subject to change without prior notice.



PO类管材挤出模具

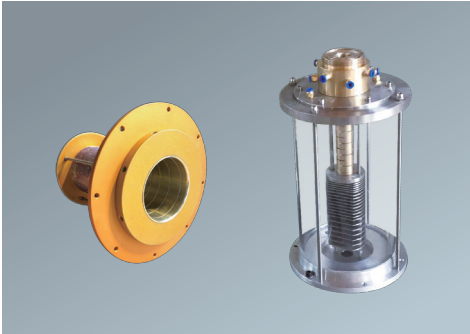
PO Pipe Extrusion Die Head

单层挤出模具

- HDPE用于燃气、供水的压力管，直径可达1600mm
- PPR用于管径达160mm的热水管
- PERT、PEX用于地板采暖
- PA用于汽车油管和气管

Single layer extrusion mould

- HDPE it suitable for gas supply, water supply pressure pipe, max diameter is 1600mm
- PPR suitable for 160mm hot water pipe
- PERT,PEX suitable for supply heating temperature underground
- PA suitable for car oil pipe and gas pipe



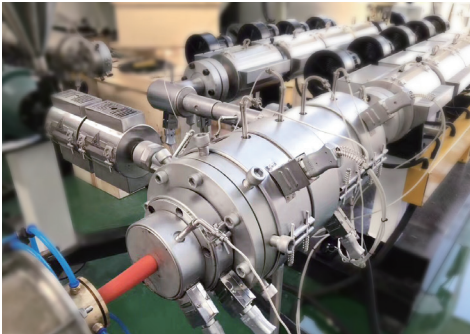
多层共挤挤出模具

- 带EVOH阻氧层的三层共挤的热水管
- 带防摩擦或划伤的M-PP二层共挤非开挖管
- 带硅胶内层的三层共挤硅芯管
- 带不同PE100原料层的二层或三层共挤供水及燃气管，直径可达1600mm



Multi layers co-extrusion mould

- EVOH oxygen resistance layer with a three-layer co-extrusion of the hot water pipe
- With anti-friction or scratch the M-PP-dig tube layer co-extruded
- Silicone inner layer with a silicon core pipe extrusion
- PE100 material with two or three layer co-extrusion water and gas pipes, with diameters up to 1600mm.



PVC管材挤出模具

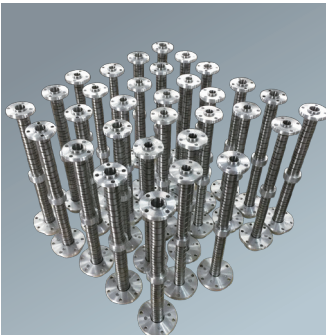
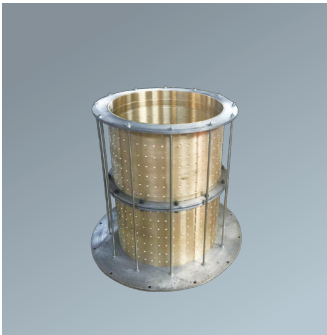
PVC Pipe Extrusion Die Head

性能和优点: PVC挤出模具采用双支架设计及优化的流道设计使管材具有较强的抗冲击能力。挤出模具锥面分配器，适用于任何圆形截面的单层或多层挤出，顺畅的流道设计具有如下的优点:

- 提供更优良的流动性，让物料流动无死角
- 极低的压力损耗
- 较低的熔体温度
- 更换颜色时的流道快速清洁

Properties: PVC extrusion mould design and optimization of double-stent flow of the design to make pipes with strong shock resistance. mould combined with concentric, cone distributor, suitable for any cross section of single-or multi-extrusion, smooth flow design have belows advantages:

- Providing high quality fluence,no any corner during fluent
- Lower consumption
- Lower melting temperature
- Clean runner quickly when changing color



主要技术参数 Main technical parameter

模具型号 Type	生产范围 Pipe spec (mm)	配套挤出机 Extruder	对应挤出量 Max.output (kg/h)
JWG-PVC160	Ø63 ~ Ø160	SJZ65/132	250 ~ 300
JWG-PVC250	Ø75 ~ Ø250	SJZ65/132	250 ~ 300
JWG-PVC315	Ø160 ~ Ø315	SJZ80/156	300 ~ 400
JWG-PVC450	Ø200 ~ Ø450	SJZ80/173	450 ~ 500
JWG-PVC630	Ø315 ~ Ø630	SJZ92/188	650 ~ 750
JWG-PVC800	Ø400 ~ Ø800	SJZ110/220	1000 ~ 1300
JWG-PVC1000	Ø500 ~ Ø1000	SJZ110/220	1000 ~ 1300

备注：以上规格参数如有变更，恕不另行通知。Note:The specifications are subject to change without prior notice.

管材牵引机

Caterpillar Hall-off Unit

性能和优点：对于不同直径管材和挤出速度要求，我们开发了多种牵引机，有2履带牵引机、3履带牵引机、4履带牵引机、6履带牵引机、直至最多达到16履带。牵引机可调范围宽，运行稳定可靠、噪音小。每一履带由单独的异步或者伺服电机驱动，通过数字控制器保证各履带牵引速度的精确同步；大容量的压紧气缸，以及管材和履带之间超长的接触长度，能保证很高的摩擦牵引力；通过对1/2履带的可切换控制，可以在直径很大和较小的管材之间互相切换，牵引机工作范围大。

Properties: For different pipe diameter and extruder speed requirements, we designed all kinds of the Hall-off unit, have two caterpillars, three caterpillars, four caterpillars, six caterpillars until upto 16 caterpillars. The wide adjustable range for the Hall-off unit, running is stable and reliable, and small noise. Each caterpillars by a separate asynchronous or servo motor drive, Via digital controller keep the accuracy of the caterpillar speed synchronization. The large capacity compression air cylinder, contact length is overlength between the pipe and the caterpillar, can ensure a high friction tractive force. based on the switchable control for the 1/2 caterpillar, can switch to each other between the big pipe diameter and small pipe diameter, large scope of working for the Hall-off unit.



用于管材挤出 For pipe extrusion

型号	生产管材规格	牵引履带数量	总功率
Model	Pipe Spec (mm)	Caterpillar No.	Motor Power(kw)
GQY-125	Ø16 ~ Ø125	2	3
GQY-160	Ø50 ~ Ø160	2	4
GQY-315	Ø75 ~ Ø315	4	4.5
GQY-450	Ø110 ~ Ø450	6	5.5
GQY-630	Ø200 ~ Ø630	6	7.5
GQY-800	Ø315 ~ Ø800	6	7.5
GQY-1600	Ø800 ~ Ø1600	12	15

备注：以上规格参数如有变更，恕不另行通知。Note:The specifications are subject to change without prior notice.

全自动管材切割机

Automatic Pipe Cutter

性能和优点：主要应用于HDPE、PP、PPR、PE-RT等多种塑料管材的定长切割。无屑切割可以保持生产环境清洁、无噪音。切口光滑整齐，提高了管材的外观质量。快速切换适用于不同的管材和不同的物料。行星切割采用进口PLC控制，机械进刀切割，采用特殊硬质合金刀片，适用于大口径厚壁管材的切割。

Properties: Mainly used for cutting the HDPE, PP, PPR, PE-RT pipe . Chipless cutter can protect the environment because there is Chipless during the cutting and there is no noise.The cutting surface of the pipe is smooth and elegance. It is suitable for cutting the pipes made by different materials and in different diameters.

无屑切割机参数表 Technical data for No-dust cutter

设备型号Type	GFQ63	GFQ250	GFQ630	GFQ800	GFQ1000	GFQ1200	GFQ1600
切割范围 (mm) Cutting range	20-63	50-250	315-630	400-800	500-1000	630-1200	800-1600
最大厚度(mm) Max. thickness	12	30	60	70	70	88	88
功率(kw) Power	1.5	4	5.5	7.5	7.5	7.5	7.5
备注 Remark	实壁管	实壁管	实壁管	实壁管	实壁管	实壁管	实壁管

备注：以上规格参数如有变更，恕不另行通知。Note:The specifications are subject to change without prior notice.



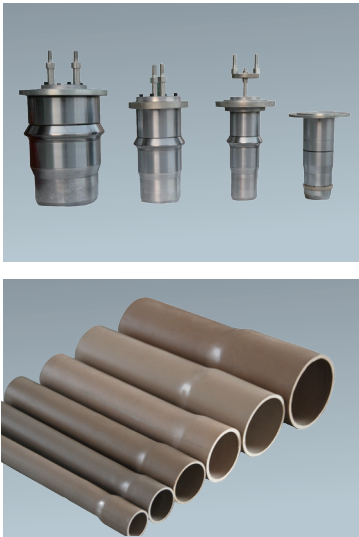
高速无屑切割机
High-speed No-dust cutter

JW GK系列全自动PVC管材扩口机

JW GK Series Automatic PVC Pipe Belling Machine

性能和优点: 该扩口系统采用欧洲先进技术,用于 PVC 实壁管和双壁波纹管,扩口形式有: 矩形扩口和 U 型、R 型扩口。控制采用日本三菱 PLC 程序自动控制,稳定可靠,扩口模具采用液压驱动。主要生产范围为 Φ32-Φ800。

Properties:The belling system adopts the advanced European technology used for PVC solid wall pipe and double-wall corrugated pipe. Belling type are rectangular type, U typeand R type. Automatic control uses the Japanese mitsubishi PLC program control which is stable and reliable. Belling die adopts hydraulic drive. Main production range is Φ 32 – Φ 800.



主要技术参数 Main technical parameter

型号Type	JW GK110	JW GK250	JW GK450	JW GK630	JW GK800
扩口管直径 Dia (mm)	Φ 32~Φ 110	Φ 63~Φ 250	Φ 163~Φ 450	Φ 163~Φ 630	Φ 630~Φ 800
液压额定压力 Hydraulic pressure rated (mpa)	3Mpa	3Mpa	5Mpa	5Mpa	5Mpa
压缩空气 Compressed air (mpa)	0.4Mpa	0.4Mpa	0.4Mpa	0.4Mpa	0.4Mpa
总功率 Power (kw)	10Kw	20Kw	25Kw	40Kw	60Kw



JW-HL系列PVC混料机组

JW-HL Series PVC Mixers

性能和优点: DYHL 系列混料机组采用 PLC 控制,主要适用于各种树脂如聚乙烯、聚丙烯、聚氯乙烯等的配料、混合、着色、干燥,以及 ABS、聚碳酸酯等工程塑料成型加工前的干燥,脱挥等工艺,也可用于酚醛树脂的混合。该机组将热与冷混工艺结合在一起,完成热混的物料自动进入冷混使其冷却,排除残余气体,并可防止结块。

Properties: DYHL series mixer adopts PLC control, which combined machine units mainly used batching.mixing.coloring and drying for various resins, such as polythene,polypropylene and PVC,as well as the drying and devolatilization process of engineering plastics such as ABS and polycarbonate before shaping, It also can be used for phenolic resin. This unit has combined the technology of hot mixing and cool mixing,which can let the material enter cool mixing after hot mixing automatically so as to cool it and removal of residual gas to prevent blocking.

主要技术参数 Main technical parameter

型号 Model	SRL100/200	SRL200/500	SRL300/600	SRL500/1000	SRL800/1600	SRL800/2500	SRL1000/3000
形式 Type	立式/vertical	立式/vertical	立式/vertical	立式/vertical	立式/vertical	卧式/horizontal	卧式/horizontal
容积 Capacity (L)	100/200	200/500	300/600	500/1000	800/1600	800/2500	1000/3000
有效容积 Effective capacity(L)	65/130	150/320	225/380	330/750	600/1050	600/1500	700/2100
电机功率 Motor (KW)	14/22/7.5	30/42/11	40/55/11	55/75/15	83/110/22	83/110/30	110/160/30
产量 Output(kg/h)	165	330	495	825	1050	1320	1650

备注: 以上规格参数如有变更, 恕不另行通知。Note:The specifications are subject to change without prior notice.



管材线下游设备

Downstream Parts for pipe line

管材破碎机

Pipe Crusher

Properties: DYPS-G series heavy pipe crusher can crush middle diameter pipe directly without shredding in advance. This series crusher inlet is specially designed for plastic pipe, the pipe and the crusher rotor form a certain angle to reach the best crushing effect, crushed pipes and profiles up to 6 meters in length. The crusher chamber is designed with third fixed knife, which can change the required crushing material first cutting points. This kind construction can reduce the impact force for high strength and large volume of material and avoid the possibility of blocking material.



主要技术参数 Main technical parameter

型号	投料口尺寸(mm)	主电机功率(kw)	转刀数量(件)	定刀数量(件)	转子旋转直径	参考生产能力(kg/h)
Model	Feed inlet	Power of main motor	Rotors	Stators	Rotor	Output
DYPS-G 700	500 × 500	22-37	6	4	Φ 500	400
DYPS-G 800	600 × 600	55-75	6/10	6	Φ 600	600
DYPS-G 1000	700 × 700	75-132	10/14	6	Φ 700	800
DYPS-G 1200	800 × 800	110-160	14/18	6	Φ 800	1000

管材撕碎和破碎机组

Pipe Crusher and Shredder Unit



Properties: DYSSG shredder is able to shred the PE, PP, PVC pipe with dia.1200mm, the length of 3-6m pipe can be shredded directly without cutting, and the rotary speed is slow and stable. Variety of pipes is put into the flat feeding tank, and the tanks closed automatically, and push the pipe by hydraulic into the center axis for shredding. The material after crushing is transported by conveyor belt for secondary crushing in order to get the requested granule. DYSSG shredder has the main advantage of energy saving safe and efficient, and the system is controlled by PLC center control system.

主要技术参数 Main technical parameter

型号	动刀回转直径(mm)	转速(rpm)	驱动功率(kw)	撕碎管材最大口径(mm)	推料器功率(kw)	产量
Model	Rotor blade swing diameter	Rotor speed	Drive power	Max.shredable pipe	Mechanical pusher power	Output (kg/h)
DYSSG-630	Φ 848	39	2 × 30	630	11	800-1000
DYSSG-800	Φ 1028	33	2 × 37	800	11	1000-1200
DYSSG-1000	Φ 1258	27	2 × 45	1000	15	1200-1500
DYSSG-1200	Φ 1478	23	2 × 55	1200	15	1500-2000

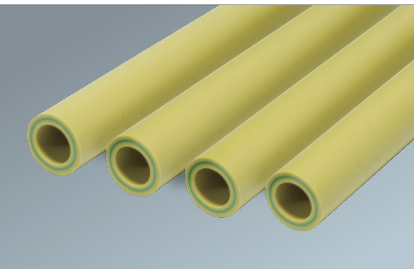
特种管材设备介绍

Speical Pipe Line

金纬管道基于多年的管材挤出生产经验,还可以对如下部分特种管材设计

PPR玻纤管 PPR fiber glass pipe

玻纤 PP-R(简称 FR/PP-R)管材是通过特殊工艺和设备采用多层共挤, 低温高速生产的高性能管材。



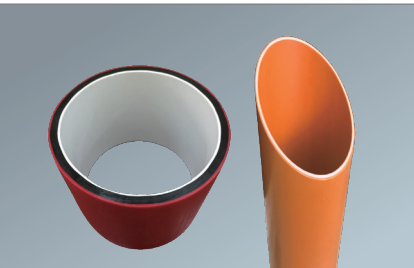
PE-Xa五层阻氧管 PE-Xa Five layer pipe

五层交联聚乙烯管, 双螺杆连续挤出、红外后交联、超声波壁厚监测等全自动生产在线技术,其交联度严格控制在 80 ± 5%,交联度稳定,分布均匀,卓越的静压性能与热稳定性,低温环境柔软性高。



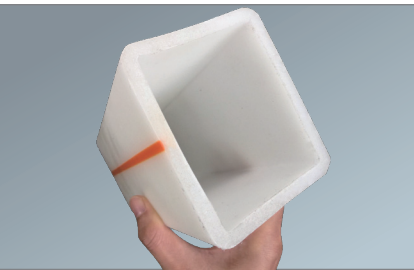
PVC芯层发泡管 3-layer PVC foamed pipe

实壁 PVC 管就是我们现在很常见的硬质塑料管。它是使用聚氯乙烯 (PVC) 塑料经过一次熔融挤出成型。主要用于给, 排水用。但是由于内壁光滑, 倒水时很容易产生很响的流水声。芯层隔音发泡 PVC 排水管是先用聚氯乙烯 (PVC) 塑料添加发泡剂经过熔融挤出成型, 发泡剂急剧分解在 PVC 塑料内产生无数的细小孔洞, 然后再在这些已经发泡的 PVC 塑料管表面包覆一层熔融 PVC 塑料。这样管子就经过二次挤出成型, 里面就是发泡层, 外面是实心保护层。发泡管可以做软的也可以做硬的, 广泛用在保温、保暖、隔音的场所, 例如: 冷库、宾馆的供、排水等。



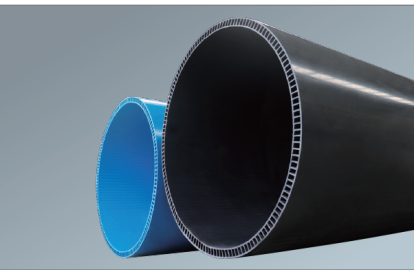
PE方形管

经过特殊设计的方形管材线可以用于生产矩形、方形特种管材, 该管材可广泛应用于花园护栏、围栏等各种支撑。



PVC-U双层轴向中空壁管

“ 双层轴向中空管 ” 以硬聚录乙烯(PVC-U)树脂为主要原料, 添加必要的加工助剂经挤出而成, 主要用于埋地排水管材。“ 双层轴向中空排水管 ” 在生产时使用无毒 PVC 树脂及稳定剂以满足卫生性能的要求, 在使用过程中不会产生二次污染。该管材适用于市政工程、公共建筑室外、住宅小区的埋地排污、排水、埋地无压农田排水, 也可适用于工业排污、排水管材。



挤出机械物联网+智能制造解决方案

工业4.0时代的互联–CPS （信息物理系统cyber physical systems），不是简单的对互联网、物联网、传感网的替代，它是信息世界和物理世界的深度融合。
未来挤出装备不再是一个孤立的自动化、信息化孤岛，未来的挤出机工厂会通过云平台与整个供需体系形成灵活智能的产品制造网络。工业4.0背景下的智能注塑发展趋势，多品种小批量快周期的定制化生产；多种生产技术和工艺的高度集成化；少人或无人状态下的自主生产过程；从原料到成品整个过程的信息化管理 ……

The interconnected in the industrial 4.0—CPS (cyber physical systems) is not a simple alternative to the Internet, the Internet of things, and the sensing network. It is a deep integration of the information and the physical.
The future extrusion equipment is no longer an isolated automation and information island. The future extruder factory will form a flexible and intelligent product manufacturing network through the cloud platform and the whole supply and demand system. In the industrial 4.0 background, the development trend of intelligent extrusion, customized production of multi variety and small batch fast cycle; High integration of various production techniques and processes; autonomous production process under less people or unmanned state; information management from the whole process of raw material to finished product...

在朝着工业4.0发展的过程中，我们的设备更智能化了！金纬机械智能化生产线：

- 1.可以监测主机电流。
- 2.可以监测主机温度。
- 3.可以监测主机电能。
- 4.可以监测主机每吨物料能耗（目前仅支持有米重控制的设备）。
- 5.可以在手机上查看数据信息。
- 6.可以记录并统计设备故障，部件更换等信息。
- 7.可以连接MES系统。
- 8.可以远程调试程序。

In the process of industrial 4.0, our equipment is more intelligent! Intelligent production line of Jwell:

- 1. can monitor the current of the extruder.
- 2. can monitor the temperature of the extruder.
- 3. can monitor the power of the extruder.
- 4., the energy consumption per ton of material can be monitored. (At present, only equipment with rice weight control is supported)
- 5. you can view the data on the phone.
- 6. records and statistics of equipment failure, parts replacement and other information can be recorded and counted.
- 7. can connect the MES system.
- 8. the program can be debugged remotely.



实时工况
Real-time operating status



作业情况统计
Working status statistics

Plastic Machinery Fully Integrated Automation + Internet Of Things Control System Solutions

基于MES系统平台，实现车间生产管理的信息沟通平台，并向智能化方向发展。
Based on the MES system platform, the information communication platform of workshop production management is realized and move toward the intelligent direction

① 研发生产融合
R&d and production integration

打通产品研发与生产的通路，实现研发与生产的信息、工艺、标准、指标值的深度融合
Work out the development and production of products, realize deep integration of development and production information, technology, standards and index

② 虚拟制造
Virtual manufacture

充分利用虚拟生产与验证平台，对车间生产、物流、质量、设备管理等资源充分验证
Make full use of the virtual production and verification platform to fully verify the workshop production, logistics, quality, equipment management and other resources

③ 智能装备&物联
Intelligent equipment & thing connection

推行智能化装备，实现多接口、多协议的设备物联，实时获取设备工况信息与参数，预测故障，提升连续性
Implement intelligent equipment, realize multi-interface and multi-protocol equipment thing connection, obtain the real time information and parameters of the equipment, predict faults and improve continuity

④ 计划排程
Planning schedule

料根据销售预测与订单诉求，平衡车间产能，合理安排生产，减少瓶颈问题，提高整体生产效率
According to sales forecast and order demands, balance workshop production capacity, arrange production properly, reduce bottleneck problems and improve overall production efficiency

⑤ 智能物流
Intelligent logistics

物流软硬件综合应用的智能物流提醒，减少物流瓶颈，提高物流配送精准率，减少停工待料
Logistics software and hardware integrated application of intelligent logistics to remind, reduce logistics bottleneck, improve logistics delivery precision rate, reduce shutdown stop

⑥ 质量管控
Quality control

基于仪器物联，获取质量数据，精准预测质量趋势，有效控制质量缺陷，提升产品质量水平
Based on instrumentation, obtain quality data, accurately predict quality trends, control quality defects effectively, and improve product quality class.

⑦ 制造过程
Manufacturing process

利用技术手段，实现制造过程透明化，敏捷响应制造中的各类异常，保证生产有序执行。
Make use of technical means to realize the transparency of manufacturing process, and quick respond to all kinds of abnormal in the manufacturing process to ensure the orderly execution of production

⑧ EHS合规
EHS compliance

按照行业标准，构建EHS车间环境参数监测，为产品制造提供适宜的基础环境
According to the industry standard, build EHS workshop environment parameter monitoring, and provide the suitable base environment for product manufacturing

⑨ 协同与决策
Synergy and decision making

解决信息不对称，减少沟通成本，支撑协同制造，基于数据的生产决策，决策过程直观、合理
Solve information asymmetry, reduce communication cost, support collaborative manufacturing, make decision based on data, make the decision process intuitive and reasonable

企业风采：品质管理 技术研发 国际交流 客户服务 员工培训

Quality Control Technology Research International Communication Customer Service Staff Training

